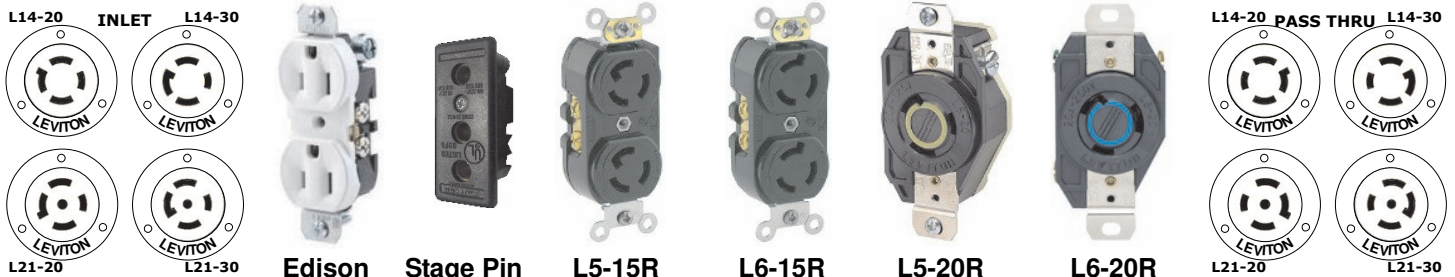
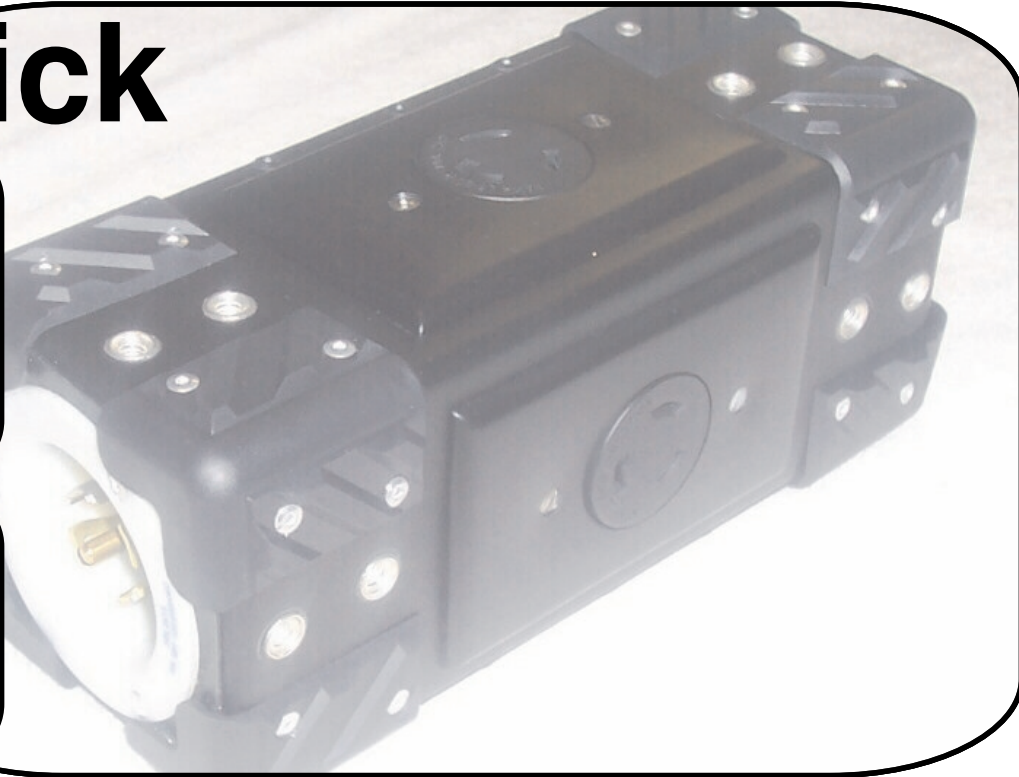


# DimmerRack

www.DimmerRack.com Unique Items for the Audio & Lighting Professional

## ND Brick



Unique output device using standard twistlock inlet and outlet connectors. Output circuits use a variety of theater based connectors ranging from Edison U-Ground, Stage Pin and Twistlock. Connectors are designed to fit into a standard duplex arrangement.

ND Brick 1 comes standard as a two circuit (L14) or three circuit (L21) supporting up to four wiring devices. Unit is available with and without Pass Thru. Currently, unit can use four input connectors, six output connectors, four pass thru connectors and all four sides. This creates (96) ND1 standard configurations.

ND Brick 2 comes standard as a two circuit (L14) or three circuit (L21) supporting up to eight wiring devices. Unit is available with and without Pass Thru. Currently, unit can use four input connectors, six output connectors, four pass thru connectors and all four sides. This creates (96) ND2 standard configurations.

Brick II horizontal or vertical clamp option allows a variety of theater clamps to be added or removed.

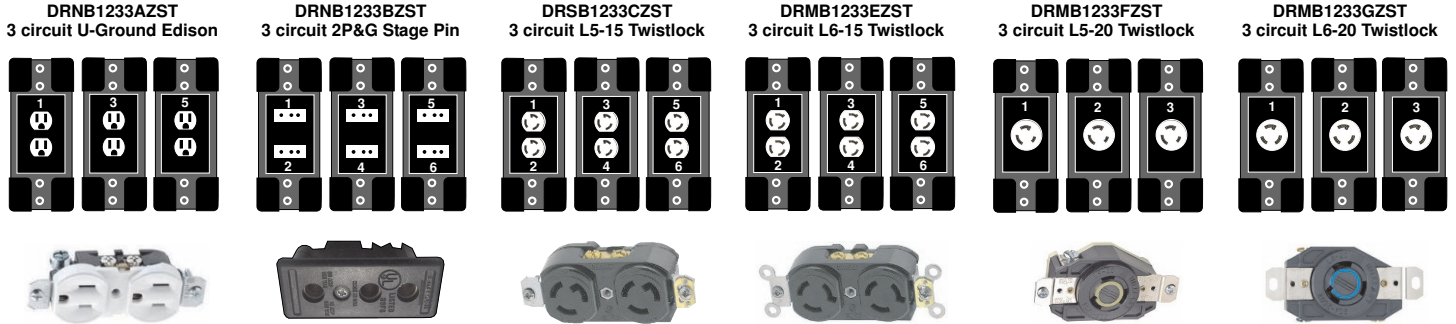
Mixing and matching output devices renders unique combinations. There are hundreds of combinations and additional connectors available not mentioned here. Enclosure is field repairable and reconfigurable based on end users needs. Swapping connectors in the field is possible to suit any configuration.

www.DimmerRack.com Redford, MI 48239 (734) 323-8916

# DimmerRack

www.DimmerRack.com Unique Items for the Audio & Lighting Professional

## ND1 Standard 3 Sided Configuration (L21-30 models shown)



## ND2 Standard 3 Sided Configuration (L21-30 models shown)

